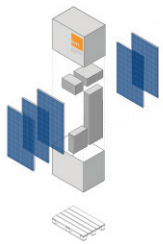


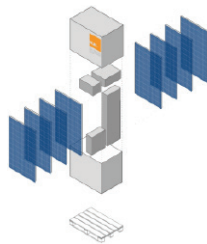
# sun.CUBE PREISLISTE



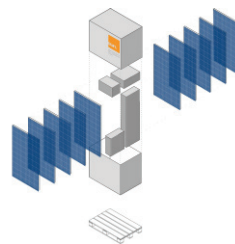
sun.factory  
Deutschland  
GmbH



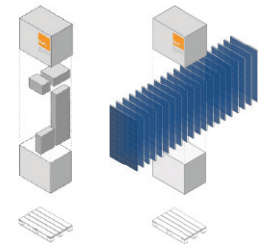
sun.CUBE 1  
1,325 kWp



sun.CUBE 2  
2,12 kWp



sun.CUBE 3  
2,65 kWp



sun.CUBE 4  
5,30 kWp

|            |               | sun.CUBE 1                  | sun.CUBE 2                 | sun.CUBE 3             | sun.CUBE 4             |
|------------|---------------|-----------------------------|----------------------------|------------------------|------------------------|
|            |               | Basic Battery,<br>1,325 kWp | Basic Battery,<br>2,12 kWp | Grid only,<br>2,65 kWp | Grid only,<br>5,30 kWp |
| Schrägdach | Preis         | 2.900,00 €                  | 4.550,00 €                 | 3.400,00 €             | 6.280,00 €             |
|            | Module        | 5 Stück                     | 8 Stück                    | 10 Stück               | 20 Stück               |
|            | Batterie      | ja                          | ja                         | nein                   | nein                   |
|            | Flächenbedarf | 8,5m <sup>2</sup>           | 13,5m <sup>2</sup>         | 17,0m <sup>2</sup>     | 34,0m <sup>2</sup>     |
| Flachdach  | Preis         | 2.900,00 €                  | 4.550,00 €                 | 3.400,00 €             | 6.280,00 €             |
|            | Module        | 5 Stück                     | 8 Stück                    | 10 Stück               | 20 Stück               |
|            | Batterie      | ja                          | ja                         | nein                   | nein                   |
|            | Flächenbedarf | 14,5m <sup>2</sup>          | 18,0m <sup>2</sup>         | 23,0m <sup>2</sup>     | 43,5m <sup>2</sup>     |
| Freifläche | Preis         | -                           | 4.550,00 €                 | 3.400,00 €             | 6.280,00 €             |
|            | Module        | -                           | 8 Stück                    | 10 Stück               | 20 Stück               |
|            | Batterie      | -                           | ja                         | nein                   | nein                   |
|            | Flächenbedarf | -                           | 18,0m <sup>2</sup>         | 23,0m <sup>2</sup>     | 43,5m <sup>2</sup>     |